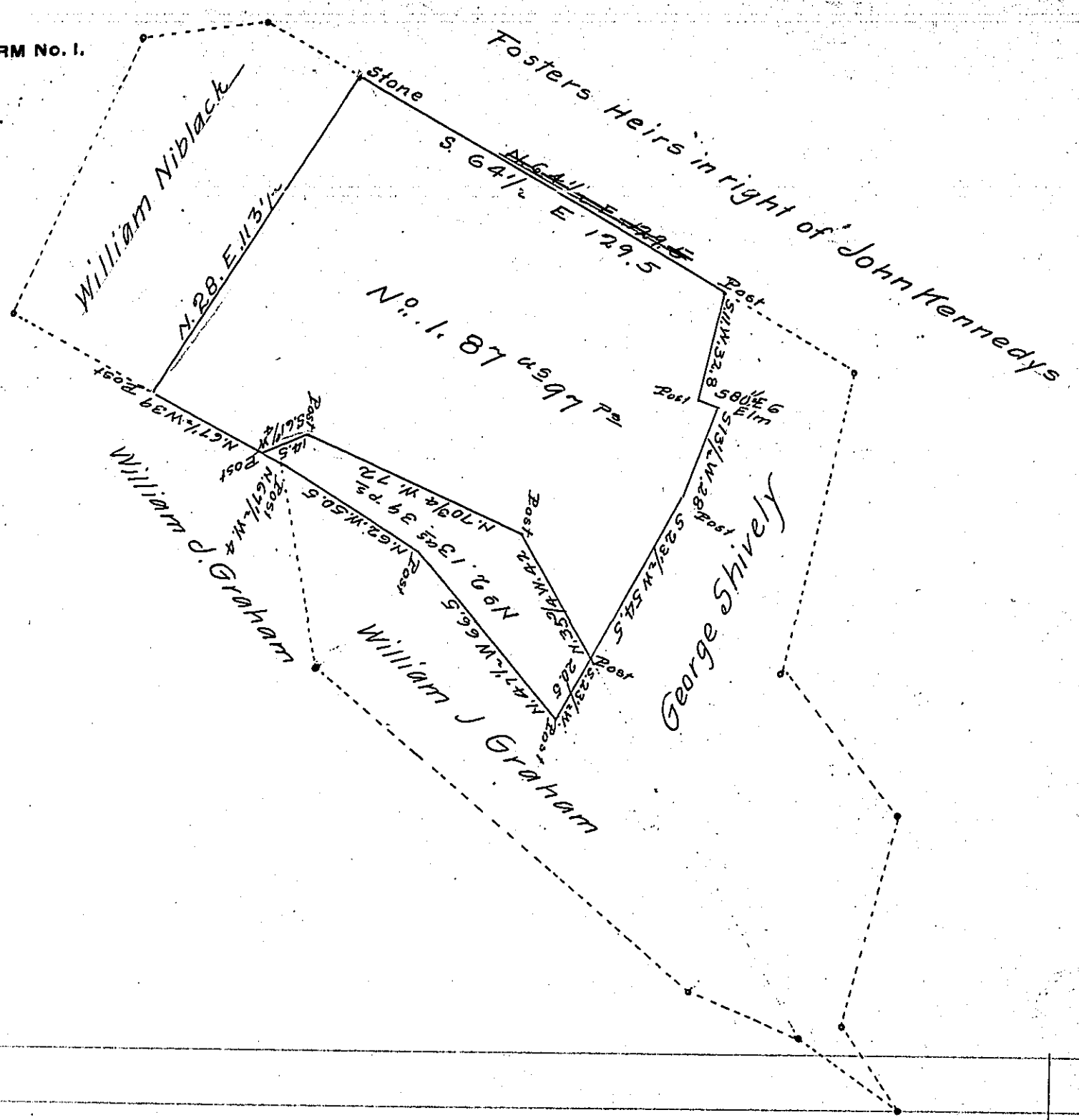


FORM No. 1.



Draught of a tract of land situate in Tyrone & Spring Townships  
 Perry County Containing 100<sup>ac</sup> 136 perches with the allowance of  
 six per Cent for Roads &c. No 1 contains 87<sup>ac</sup> 97<sup>ps</sup> and allowance being part  
 of 170<sup>ac</sup> 71<sup>ps</sup> surveyed on a Warrant granted to Thomas Floss dated June 1<sup>st</sup> 1762  
 No 2 contains 13<sup>ac</sup> 39<sup>ps</sup> and allowance being part of 55<sup>ac</sup> 165<sup>ps</sup> surveyed  
 October 15<sup>th</sup> 1784 on a warrant granted to Samuel Floss dated 23<sup>rd</sup>  
 day August 1784. Surveyed the above October 24<sup>th</sup> 1851 for Pat-  
 enting for George Shively

James Woods C. S.

To J Porter Brawley  
 Surveyor General of Pennsylvania

IN TESTIMONY that the above is a copy of the original remaining on file in  
 the Department of Internal Affairs of Pennsylvania, made  
 conformably to an Act of Assembly approved the 16th day of  
 February, 1833, I have hereunto set my Hand and caused  
 the Seal of said Department to be affixed at Harrisburg,  
 this fifteenth day of September 1906

*Loac P Brown*  
 Secretary of Internal Affairs.